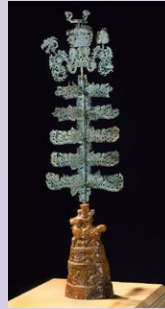


# Ancient Chinese Objects

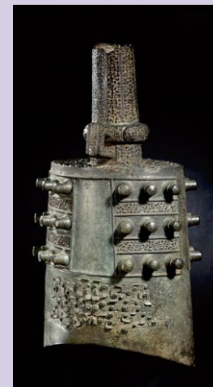
Click on the image to see the artwork in detail on Google Arts and Culture.



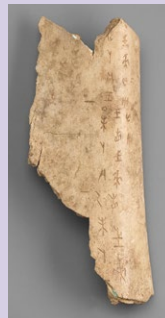
Buddha dated 338, 338. China; Hebei province, Later Zhao kingdom (319–351). Bronze with gilding. Asian Art Museum, The Avery Brundage Collection, B60B1034.



Money tree, prob. 100–200. China; Sichuan province, Eastern Han period (25–220). Bronze with glazed earthenware base. Asian Art Museum, Gift of the Connoisseurs' Council, 1995.79.a-.dd.



Ritual bell (*Wangsun Yizhe yongzhong*), approx. 550 BCE. China, Eastern Zhou period (770–256 BCE). Asian Art Museum, The Avery Brundage Collection, B60S552.



Oracle tablet, 1384–1112 BCE. China, Shang dynasty (approx. 1600–1050 BCE). Animal bone. Asian Art Museum, The Avery Brundage Collection, B60M500.



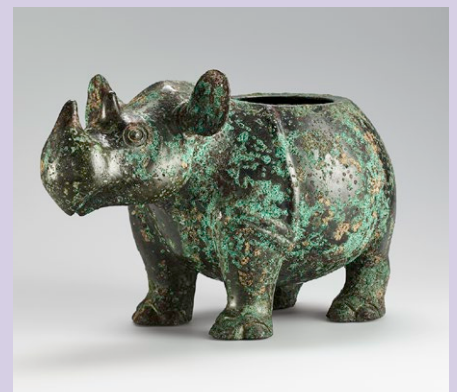
Ritual object (*cong*), approx. 3400–2200 BCE. China; Jiangsu or Zhejiang province, Neolithic period (approx. 10,000–2000 BCE). Nephrite. Asian Art Museum, The Avery Brundage Collection, B60J603.



Ritual food vessel (*fangding*), 1050–900 BCE. China; probably Shaanxi province, Western Zhou period (approx. 1050–771 BCE). Bronze. Asian Art Museum, The Avery Brundage Collection, B60B954.



Stele of the Buddha and two bodhisattvas, 533. China, Northern Wei dynasty (386–534). Limestone. Asian Art Museum, The Avery Brundage Collection, B60S44+.



Ritual vessel in the shape of a rhinoceros, prob. 1100–1050 BCE. China; probably Henan province, Shang dynasty (approx. 1600–1050 BCE). Bronze. Asian Art Museum, The Avery Brundage Collection, B60B1+.



Tomb guardian, one of a pair, approx. 690–750. China, Tang dynasty (618–907). Earthenware with multicolor glazes. Asian Art Museum, The Avery Brundage Collection, B60S51+.



Ritual wine vessel (*Yayi jia*), China; Henan province, Shang dynasty (approx. 1600–1050 BCE). Bronze. Asian Art Museum, The Avery Brundage Collection, B61B1+.