

Design a Sari

Did you know there are over 100 ways to wear a sari? How an Indian woman drapes her sari can tell you the occasion, her status, and which region she's from. Learn about two styles of Indian sari and then design your own on the provided template.

DURATION

30–60 minutes



MATERIALS

Video: “[Draping the Sari](#)”

Tissue paper in different colors

Scissors

Glitter pens or glitter glue

Glue

Ruler and pencil

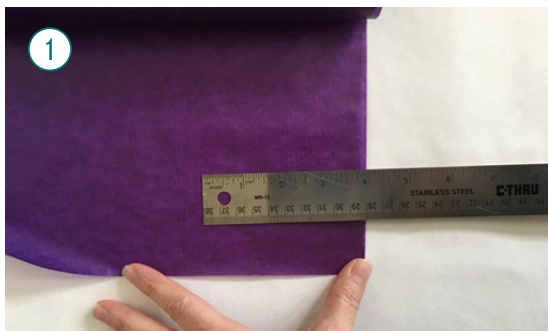
Printout of body template
(last page of this document)



PART 1: WATCH THE VIDEO

- 1 Watch the video “[Draping the Sari](#),” to see two styles of Indian saris and how they are draped.
- 2 Pause the video to get a closer look at the colors and designs on the sari. What patterns do you see? Which parts of the sari have the most decoration? Notice the *zari*, or gold thread, used to make the fabric shimmer.
- 3 Notice how the model folds the fabric to make pleats. Where does she place the pleats? What effect do they create?
- 4 For this activity we will design a *Gujarati* (Northern Indian type) sari. **THINK:** Which colors do you want in your sari? What patterns do you want to include?

PART 2: MAKE YOUR SARI



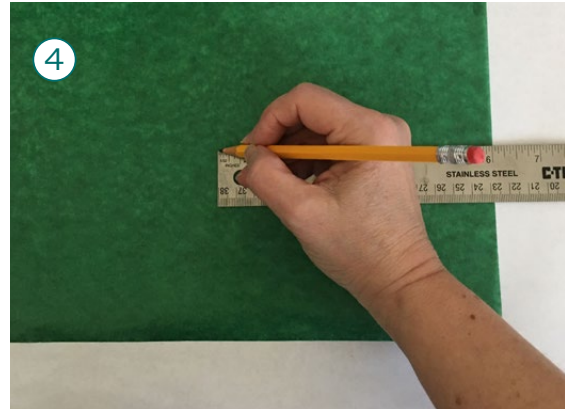
Choose the color you want for the blouse that your paper model will wear underneath the sari. Measure and cut out a 4.5 inch x 4 inch piece of that color tissue paper.



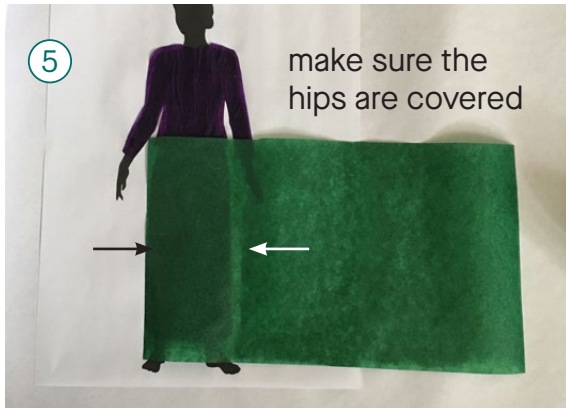
Place your paper on the model, with the 4.5 inch side lining up with the shoulders. Trace the shape you need for the blouse. Trace slightly outside the edges of the model so it's easier to cut a shape that covers the model.



3
Cut out the blouse and glue it on the model.



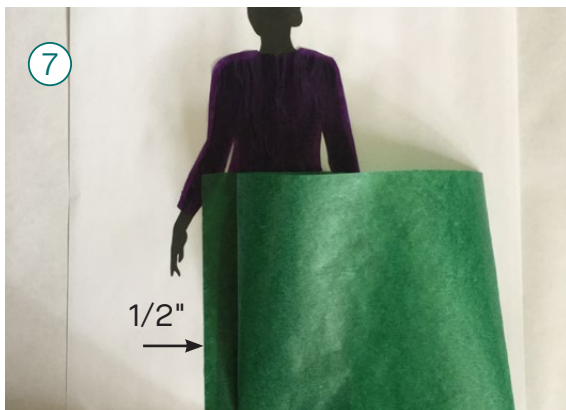
4
Measure and cut out a 10 inch by 6 inch rectangle of the color tissue paper you want to use for the lower part of the sari.



5
make sure the hips are covered
Place the paper rectangle on the model so that it covers the hips and legs.



6
2.75"
Fold in the paper from the right to make your first fold which measures about 2.75 inches.



7
1/2"
Fold the portion of the paper now on the left back to the right to make your first pleat, make that pleat about 1/2 inch.



8
Continue to fold the paper back and forth to make 3 more pleats for your skirt, each pleat measuring about 1/2 inch.



9 Fold the top corners of the skirt in, so the skirt aligns to the hips of the model.



10 Glue the skirt to the model and then glue the pleats in place.



11 Cut out a 4 inch by 4 inch rectangle for the top part of the sari.



12 As you did with the skirt, fold from the right to make the pleats, this time fold the pleats at an angle from the top.



13 Fold back the corners like you did on the skirt at the top of the sari.



14 Glue down the top of the sari, including inside the pleats.



Now you are ready to decorate your sari.



You can use a different color tissue paper to make a border (See the sample on the first page). Use the glitter pens or glitter glue to add *zari* decoration to your sari.

MORE IDEAS TO GET CREATIVE

Add a background in colored pencils or cut out your model and paste her on a photo you like. For more inspiration, type “sari” in the search field of the [Asian Art Museum’s online collection](#) and click the resulting images to see close-ups. **Have fun!**

SHARE YOUR SARI!

Post it to Instagram or Twitter with the hashtag “**#AAMSari**” so we can see your creation!



